

THREATS AND OPPORTUNITIES OF AI

AI THREATS

IF YOU DON'T TAKE ACTION

AI OPPORTUNITIES

IF YOU DO TAKE ACTION

Short Term (<12 months)

Long Term (<5 years)

HOW IS MACHINE INTELLIGENCE LIKELY TO AFFECT YOUR LIFE, BUSINESS, AND SECTOR?



What is the risk of your sector being replaced with a two-sided market, such as Airbnb or Uber?



Can your company respond to a polarized professional / casual workforce?



What data do you have within your company that could be used to train a machine intelligence?



What other companies could you share data with in a valuable partnership?



SECTOR EXAMPLES

TRANSPORT

Autonomous Cars, drones, less ownership, smart maintenance



FOOD

AI-assisted restaurant management, cooking robots

AGRICULTURE

Distribution from source, real-time sensors



INTERNATIONAL BUSINESS

Machine translation of speech in real-time, Cryptocurrencies

HUMAN RESOURCES

Globalised staff-on-demand, Algorithmic Management



PERSONAL CARE

Automated Accounting, scheduling, client monitoring

HEALTHCARE

Machine diagnosis, machines replacing skilled practitioners



PRODUCTION

Cheap robot workers capable of a wide range of tasks

FINANCE

Bitcoin-derived cryptocurrencies, and Smart Contracts



RETAIL

AI-mediated sales and product discovery, checkout machines

CLOTHING

Fast and easy body scanning, mass-customised clothing



LOGISTICS

Machine-controlled warehouses, automatic delivery and storage

LAW

Patent Search and Jurisprudence, Blockchain Notaries



COMMERCE

Sharing Economy, Faster payments, Conversational Retail

SECURITY

Bots, Crime Prediction, Smart Property, AI surveillance



EDUCATION

AI assistants that understand learning abilities, agile curriculae

INSURANCE

Machine Intelligence Prediction, information at source

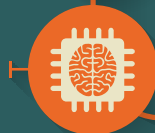


ENTERTAINMENT

AI within toys, games that rival real physical experiences

CONSULTANCY

Prediction Markets, Knowledge Engines, AI diagnosis



GOVERNANCE

Avoidance of traditional channels to trade stocks, tax evasion

CONSIDER HOW CHANGES DUE TO MACHINE INTELLIGENCE WILL AFFECT OTHER SECTORS, AND HOW THAT CAN SPILL OVER IN YOUR OWN, FOR EXAMPLE:



Knowledge engines more accurate than physicians



Smart property making certain crimes like theft or mugging less rewarding



AI-assisted sales changing how people find your products and services



Staff on-demand making seasonal agricultural tasks faster



Autonomous Deliveries affecting food distribution locations



Sensors in your customer's devices giving you insights about their needs



Autonomous Vehicles scanning the local environment in real-time by default



Aged or disabled people having more ways to participate in society

